



Acres of fun. Well done.

Where planning a successful event is a picnic

Badminton Basketball
Carnival rides Delicious foods
Face painting Games Hayrides
Horseshoes Dancing
Kayaking Mini golf
Pie-eating contests Pony rides
Rock climbing Softball
Tennis Tug-of-war
Volleyball Swimming

FOOD AND FUN

FROM 10 AM TO 5:00 PM

FOOD

10:00—12:00

Donuts, Muffins, Fresh Bagels/
Cream Cheese, & Danish

11:00 – 2:00

New England Clam Chowder
Assorted Cheese & Crackers
Fresh Crudite with Dips
Make Your Own Tacos

12:00 – 4:30

Chilled Relish Tray /
Radishes, Olives, Carrots & Celery
Assorted Fresh Breads and Rolls
Grilled Hot Dogs and Sauerkraut
Grilled Hamburgers & Cheeseburgers
Sliced Tomatoes and Onions
Pickles/Relishes/Mustard/Ketchup
Barbecued & Southern Fried Chicken
Hot, Sliced Roast Beef
Sausage, Peppers & Onions
Fresh Potato Salad
Fresh Cole Slaw
New England Baked Beans
Garden Salad/Assorted Dressings
Three Cheese Baked Penne
Corn on the Cob/Butter
Chilled Watermelon Wedges
Decorated Sheetcake



Available all day:

Coffee, Tea, Milk, Decaf
Coke, Orange, Sprite, Diet Coke
Root Beer, Iced Tea, Fruit Punch, Ice Water

FUN

Ice Cream Treats
from the Ice Cream Truck

Fresh Popcorn & Cotton Candy

“Alpine” Rock Climbing Wall

Air Brush Tattoos

Pony Rides

Arts & Crafts

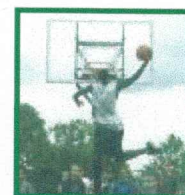
Canoes and Kayaks
at the Lake

Disc Jockey
with Music, Dancing, Games

Mini Golf

Heated Swimming Pools
with Diving Area

Field Events
Corn Hole
Softball
Volleyball
Sand Volleyball
Tennis
Horseshoes
Badminton
Basketball
Bocce
Ping Pong



**Bring your bathing suits and towels (hot showers are available).
Holiday Hill supplies the sporting equipment.**

**Due to health and food safety,
COOLERS AND PETS ARE NOT ALLOWED ON THE PREMISES**

AGE BREAKDOWN: 0-2 NO CHARGE, 3-11 CHILDREN, 12 & UP ADULTS

43 Candee Road | Prospect, CT 06712 | (203) 758-4547
www.holidayhill.com

DIRECTIONS TO HOLIDAY HILL

Best Route (by bus or car) from Hartford:

Take I-84 West to Exit 26 (Cheshire - Prospect). Take a left off the exit ramp onto Route 70. Stay on Route 70 to the third traffic light and take a right at "The Notch Store" onto Route 68. Follow Route 68 for approximately 2 miles to the crest of the hill and turn left onto Cook Road (Holiday Hill sign on the corner there). Follow Cook Road for approximately 2 miles and take a left onto Candee Road. Holiday Hill is down the street on the left.

From Danbury or points west using Interstate 84:

Take I-84 East to Exit 23 (just over the Waterbury bridges). Follow the signs to get on Route 69 South. Follow 69 South for 6.8 miles to the intersection with Route 42. Take a left onto Route 42 East. Take the first left onto Candee Road. Holiday Hill is down the street on the right.

Best Route (by bus or car) from New Haven and the eastern shoreline:

Take best route to the I-91 entrance in New Haven. Take Exit 10 off of I-91 and follow the connector (Route 40) to the end. Take a right at the end of Route 40 (this is Hamden) onto Route 10 North. Follow Route 10 North into Cheshire. Look for McDonald's on the right. Just past McDonald's, take a left at the traffic light (there is a gas station on the corner) onto Route 42 West. Follow Route 42 for 3.5 miles and take a right onto Candee Road. Holiday Hill is down the street on the right.

Best Route for buses from New York City and points south of Bridgeport:

Take I-95 North to Exit 27A (just before Bridgeport, CT) and follow signs to get on Route 8 North. Follow Route 8 to Exit 26. Take a right off the exit onto Route 63 South. Follow 63 South for 4.2 miles and take a left onto Route 42 East. Follow Route 42 East for 1.9 miles (through the intersection with Route 69) and take a left onto Candee Road. Holiday Hill is down the street on the right.

From Bridgeport or points south using the Merritt Parkway:

Take the Merritt Parkway (Route 15) East to Exit 59. This exit is just before the tunnel in New Haven. Take a left off the exit ramp onto Route 69 North and follow 69 for approximately 9.5 miles to the intersection with Route 42. Take a right onto 42 East and take your first left onto Candee Road. Holiday Hill is down the street on the right.

From Middletown or Meriden using Route 691 West:

Take Route 691 West to Exit 3 (Cheshire, Route 10). Take a left off the ramp onto Route 10 South. Stay on 10 South for 5.3 miles and take a right at the traffic light (gas station on the corner) onto Route 42 West. Stay on 42 West for 3.5 miles and take a right onto Candee Road. Holiday Hill is down the street on the right. NOTE: You could also follow 691 all the way to I-84 then take I-84 West and follow the directions "from Hartford".



RESORT ADDRESS (Holiday Hill's physical location is on the town line of Cheshire and Prospect, Connecticut):

**43 CANDEE ROAD
PROSPECT, CT 06712
TELEPHONE: 203-758-4547**